

BENNETT



3 PARK
LANE

MADISON, NJ

Welcome home.

This newly rebuilt six-bedroom with six full bathrooms and two half-baths is perched on Park Lane—one of the most private and sought-after streets in Madison, NJ.

For commuters, the property is ideally situated just minutes from Madison's historic 92-year-old stone train station providing direct access to Manhattan — just a 50-minute ride to New York City's Penn Station.

Completed in February 2020, the 6,000-square-foot home is perfectly suited for families — with a spacious eat-in kitchen, expansive patio for entertaining, a first floor guest suite, three-car garage and finished basement.

The three-story home sits on .65 acres and features all of the details one would expect from a custom Bennett rebuild — Connecticut Fieldstone, custom board and batten shutters, wide oak plank flooring, vaulted ceilings, a Pennsylvania blue stone patio, copper roofing, and luxe kitchen appliances.







INSPIRED BY THE PAST. DESIGNED FOR TODAY.

6,000 Square Feet

6 Bedrooms

6 Full Bathrooms

2 Half-Bathrooms

.65 Acres

The home's main entrance opens into a spacious foyer and formal living room, with the dining room, eat-in kitchen and open concept living areas to the back. The eat-in kitchen with an expansive center island opens to the family room with a custom Connecticut Fieldstone fireplace. An open floor plan encourages a free flow between the interior and exterior blue stone patio and flat backyard with ample space to entertain. Other highlights include:

- Custom cabinets, quartz counter tops, farm sink, espresso bar, wine refrigerator, double dishwashers & microwave drawer
- A first floor guest suite with full bathroom, third floor equipped with half-bath, finished full basement and private second floor balcony with French doors that open to serene backyard

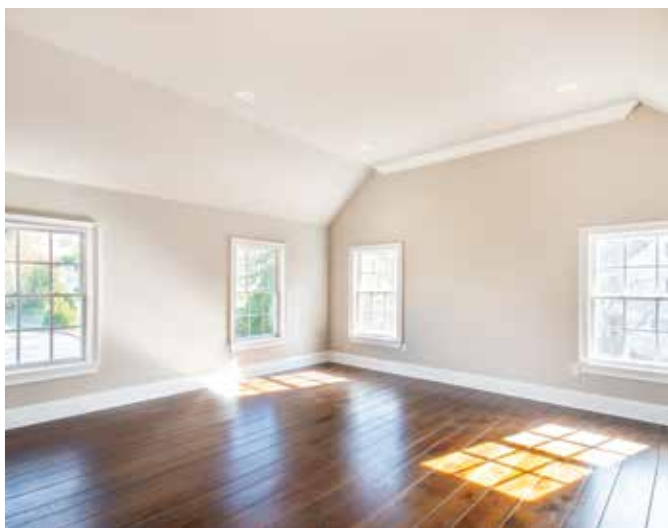




INTERIOR FEATURES

WIDE OAK FLOORS | TWO CONNECTICUT FIELDSTONE FIREPLACES | WOLF & SUB-ZERO APPLIANCES

All bedrooms come equipped with a private en suite. Vaulted ceilings and custom dormers with 8-inch crown and base molding are paired with signature Bennett detailing like specialty doors, a soaking tub, rain showers and carrera marble vanities. All kitchen appliances are stainless steel—including a 48-inch Wolf six-burner gas range/oven, a 48-inch Sub-Zero refrigerator a 24-inch Sub-Zero wine fridge and espresso bar.





EXTERIOR FEATURES

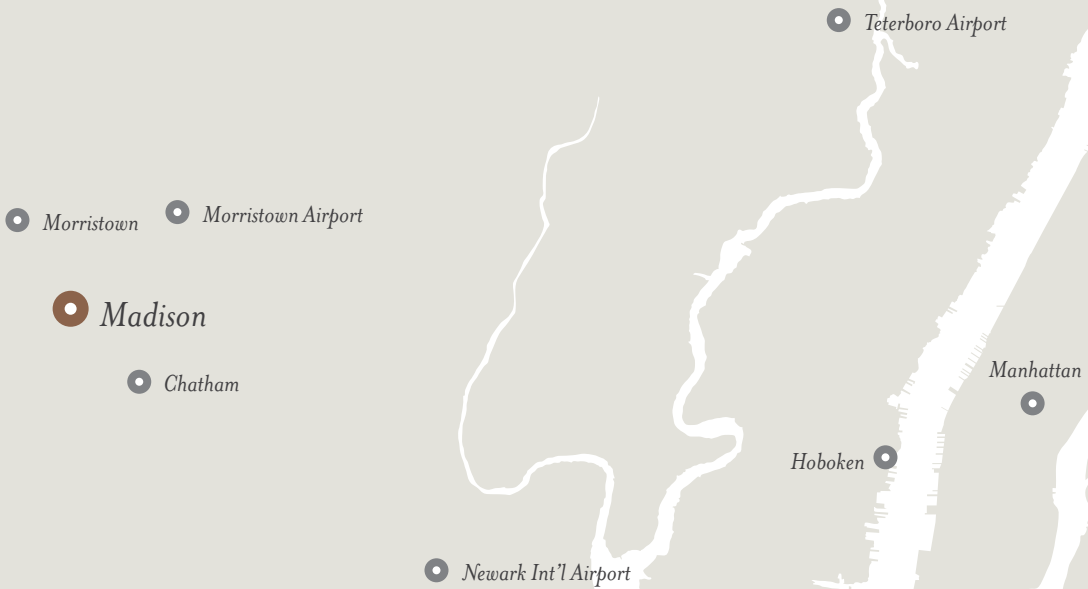
CUSTOM PENNSYLVANIA BLUE STONE PATIO | THREE-CAR GARAGE | .65 ACRE LOT & FLAT BACKYARD

The home's custom exterior blends old with new. Rustic Connecticut Fieldstone complement a custom stained mahogany front door with transom, a copper roof, and signature Bennett board and batten shutters. A three-car garage with custom stained mahogany doors frame the property with an expansive Pennsylvania blue stone patio with outdoor grill for entertaining and private second floor balcony overlooking a serene backyard.



Living in Madison, NJ

People often say Madison's quaint downtown could pass for a movie set — which probably explains why it appeared as a setting in films like "The Family Stone," and "The Sopranos." But there is much more to Madison than its manicured facade. As home to two colleges — Drew University and Fairleigh Dickinson University's College at Florham — this borough 25 miles west of New York, has an international flavor.



THE SCHOOLS

The Madison School district was recently recognized as 30th best school district in the state of New Jersey by Niche ratings. Madison is also ideally situated for students attending neighboring Oak Knoll, Kent Place and Oratory Preparatory.

THE COMMUTE

Madison's handsome 92-year-old stone train station is on the Morristown Line, which offers Midtown Direct service to Penn Station. The commute takes 50-minutes.

THE HISTORY

Madison, named after President James Madison, was nicknamed the Rose City because of a 19th-century rose-growing industry started by wealthy residents drawn to Madison by its location on the Morris & Essex train line. The town's seal includes a rose.

Also For Sale:



—
31 LENAPE TRAIL • CHATHAM, NJ

ABOUT US

THE BENNETT DIFFERENCE

Launched in 1975, Bennett Building & Remodeling, LLC has more than 40 years of experience designing, building and renovating homes from concept to completion.

Today, the family-run business is one of the most respected and well-known custom home builders in Northern New Jersey.

Based in Morristown, New Jersey, the Bennett family has designed and built hundreds of projects in the affluent towns of Summit, Morristown, Madison, and Chatham.

We have developed a seamless process to help our clients navigate each step of the construction process — from blueprints and floor plan development to custom cabinetry and stone masonry. We often mix our favorite materials, styles and eras for a decidedly approachable, and sophisticated result.

—
Danielle L. Bennett
Broker and Sales Associate, Keller Williams Realty

M. (973) 476-7115
DanielleBennett@kw.com

488 Springfield Avenue
Summit, NJ 07901